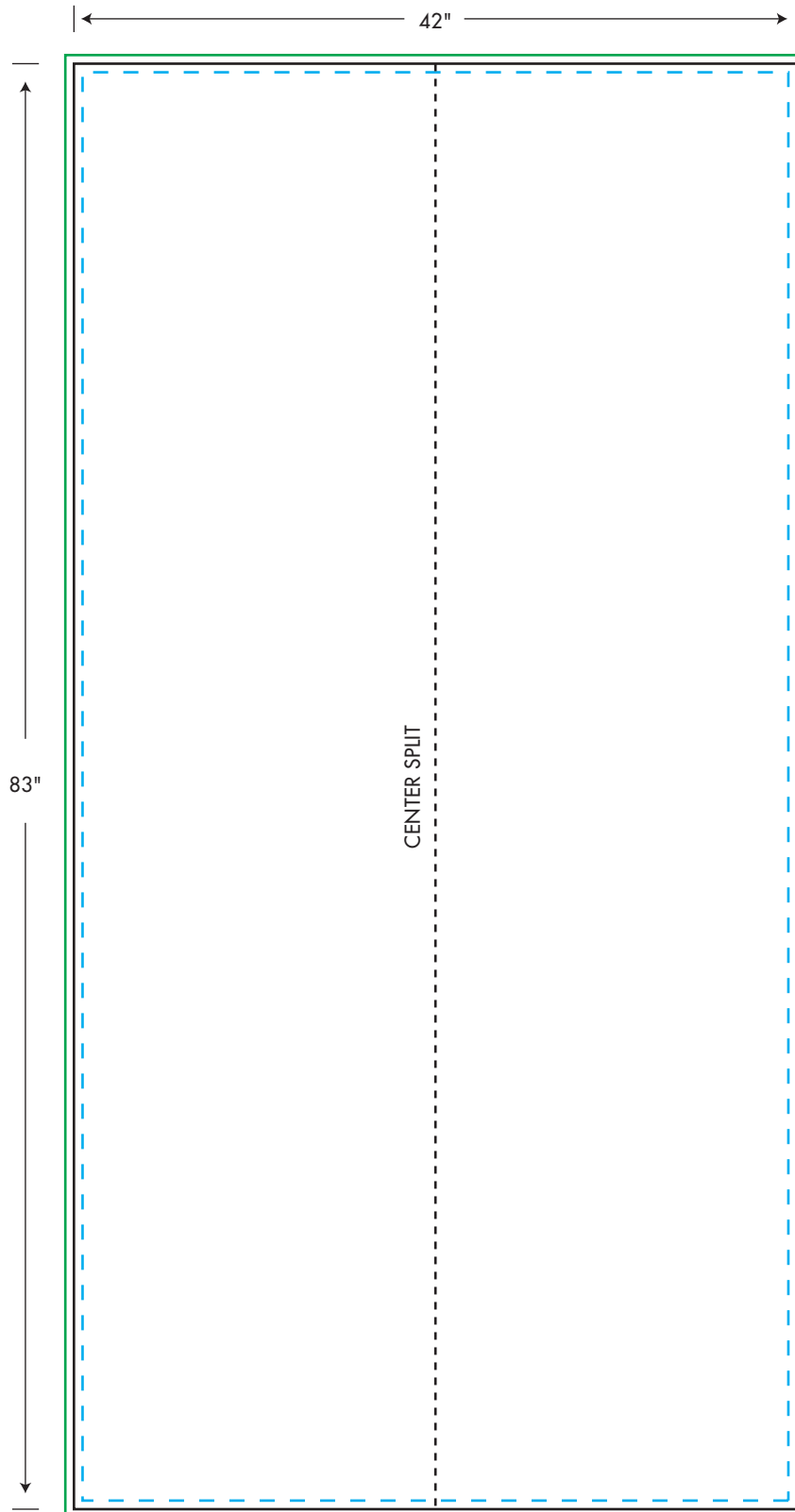


Elevator Door Graphic Specifications

42" x 83" Double Door



TRIM: 42" x 83"

BLEED AREA: 43" x 84"

LIVE AREA: 41" x 82"

Software Applications

PLI's Prepress Department is Mac-based. We accept artwork created in most industry-standard software applications, including the current versions of QuarkXpress, InDesign, Illustrator and Photoshop. Please do not submit Microsoft Word, Excel, Power Point or Publisher files. High resolution PDFs are accepted – please make sure files include bleed. If you have questions about an application not listed here, please call.

File Information/Formats

Please submit vector artwork whenever possible.

If creating artwork in Photoshop, please submit layered, CMYK files. Resolution should be 120 at actual size.

Do not send low resolution images from the internet.

Supply all necessary fonts and images. Collect for Output (Quark) or Package (InDesign) your documents to ensure everything is included.

All type should be at least 9pt. in size. To be legible, reversed type should be at least 12pt.

Artwork using PMS colors and Photoshop monotone or duotone files are accepted.

Keep all non-bleed elements (logos, text, etc.) 1/2" inside all edges of the trim.

Bleed, if applicable, should extend 1/2" beyond the edges of the trim.

All rules and outlines should be 1 pt. or greater.

Spot colors can be converted to CMYK but cannot be guaranteed to match the specified PMS color when printed as process.